

# THE WESTPORT

**1,170 SQ. FT.**  
2 Bedroom  
2 Bathroom



Material is an artist rendering based on current development concepts, which are subject to change. No guarantee is made that the facilities depicted will be of the same type, size, or nature, as depicted.

Contact  
**Trisha**

**Phone:** 403-331-1132

**Email:** [trisha@newrockhomes.ca](mailto:trisha@newrockhomes.ca)

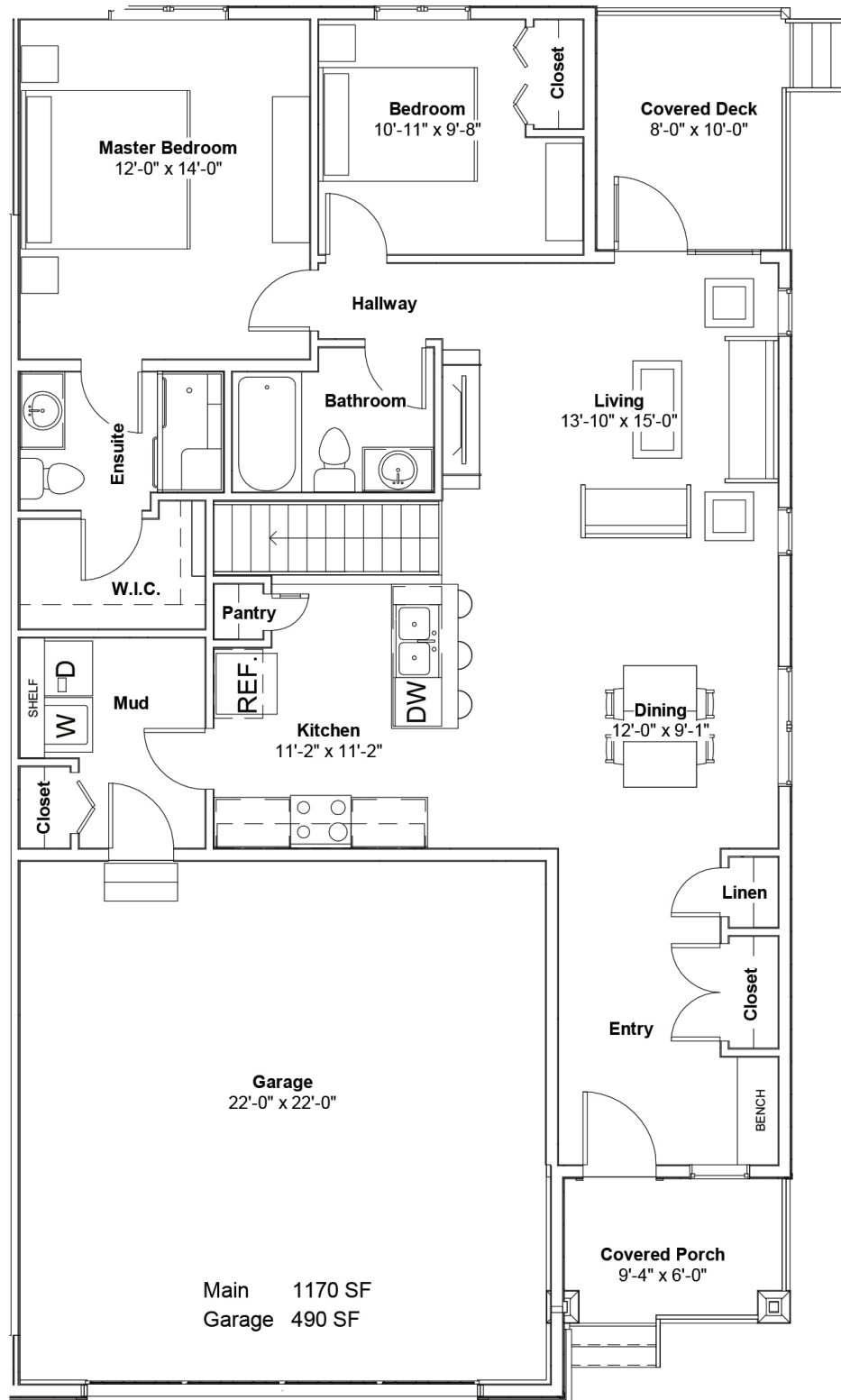
Or visit [parksideliving.ca](http://parksideliving.ca)



THE ESTATES AT  
**PARKSIDE  
PLACE**

# THE WESTPORT

NEWROCK  
DEVELOPMENTS



Contact  
**Trisha**

Phone: 403-331-1132

Email: [trisha@newrockhomes.ca](mailto:trisha@newrockhomes.ca)

Or visit [parksideliving.ca](http://parksideliving.ca)



THE ESTATES AT

**PARKSIDE  
PLACE**

# THE WESTPORT

(Option 2)

**1,177 SQ. FT.**  
2 Bedroom  
2 Bathroom



This version of the Westport has more kitchen space and a larger master suite!  
Upgrading to this plan will add \$6000 to the base price.

Contact  
**Trisha**

Phone: 403-331-1132  
Email: [trisha@newrockhomes.ca](mailto:trisha@newrockhomes.ca)  
Or visit [parksideliving.ca](http://parksideliving.ca)

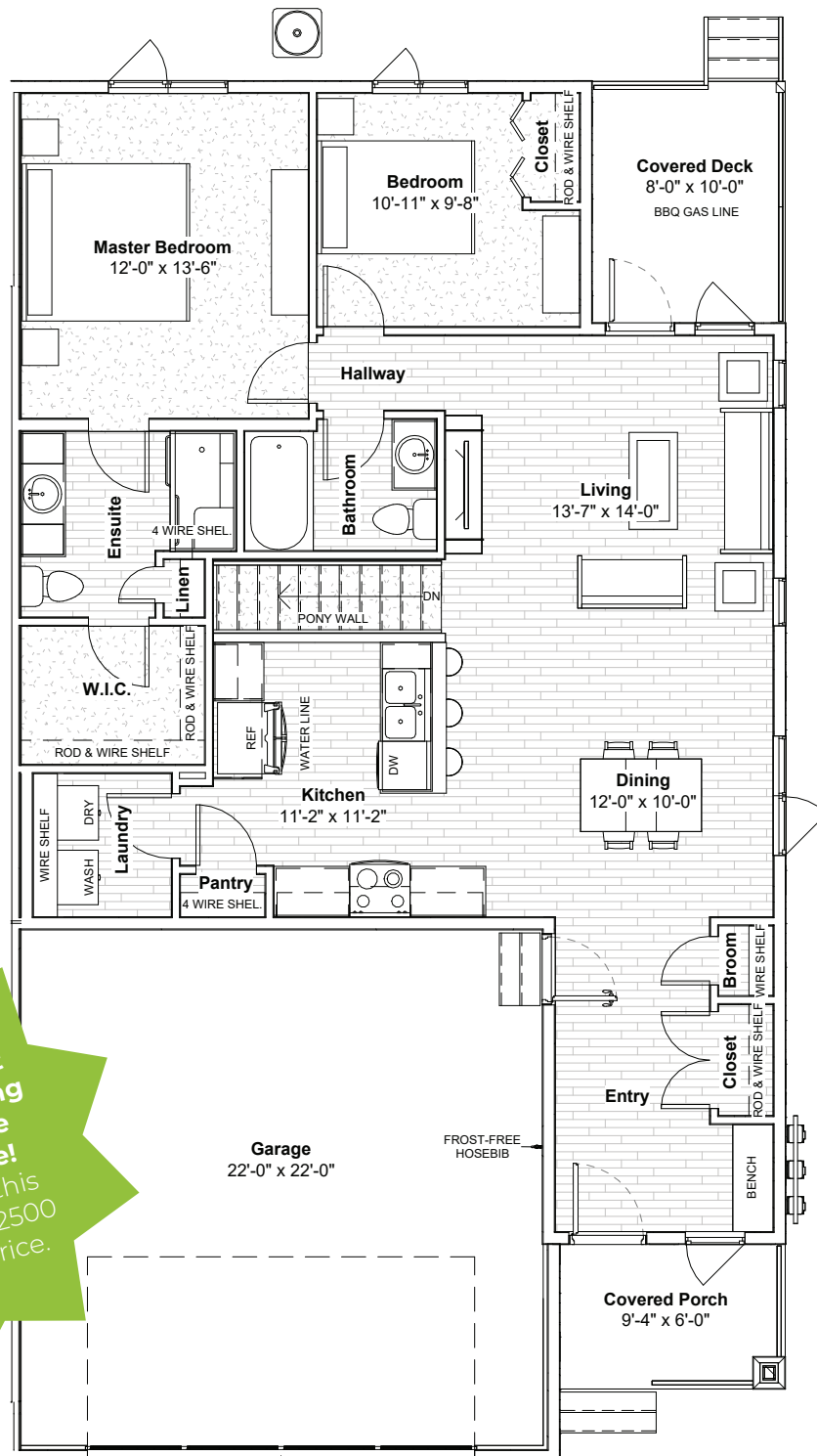


THE ESTATES AT  
**PARKSIDE PLACE**

# THE WESTPORT

(Option 3)

**1,170 SQ. FT.**  
2 Bedroom  
2 Bathroom



This version of the Westport has a larger living area and more storage space! Upgrading to this plan will add \$2500 to the base price.

Contact  
**Trisha**

**Phone:** 403-331-1132  
**Email:** trisha@newrockhomes.ca  
Or visit [parksideliving.ca](http://parksideliving.ca)



THE ESTATES AT  
**PARKSIDE PLACE**